



# Archives

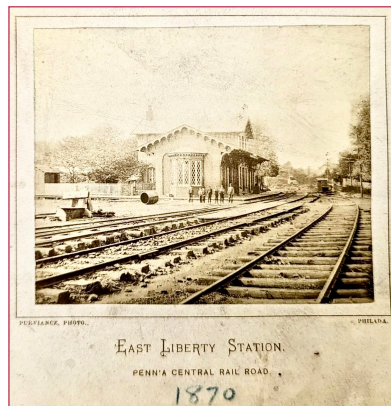
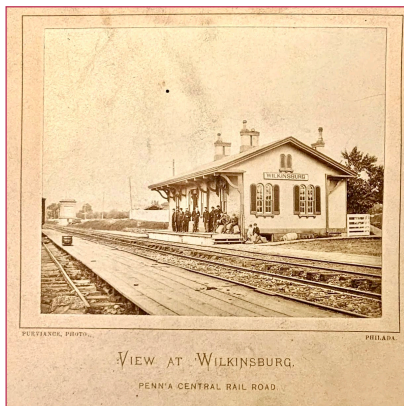
JUNE  
2023

WILKINSBURG HISTORICAL SOCIETY NEWSLETTER  
VOLUME 29, ISSUE 5

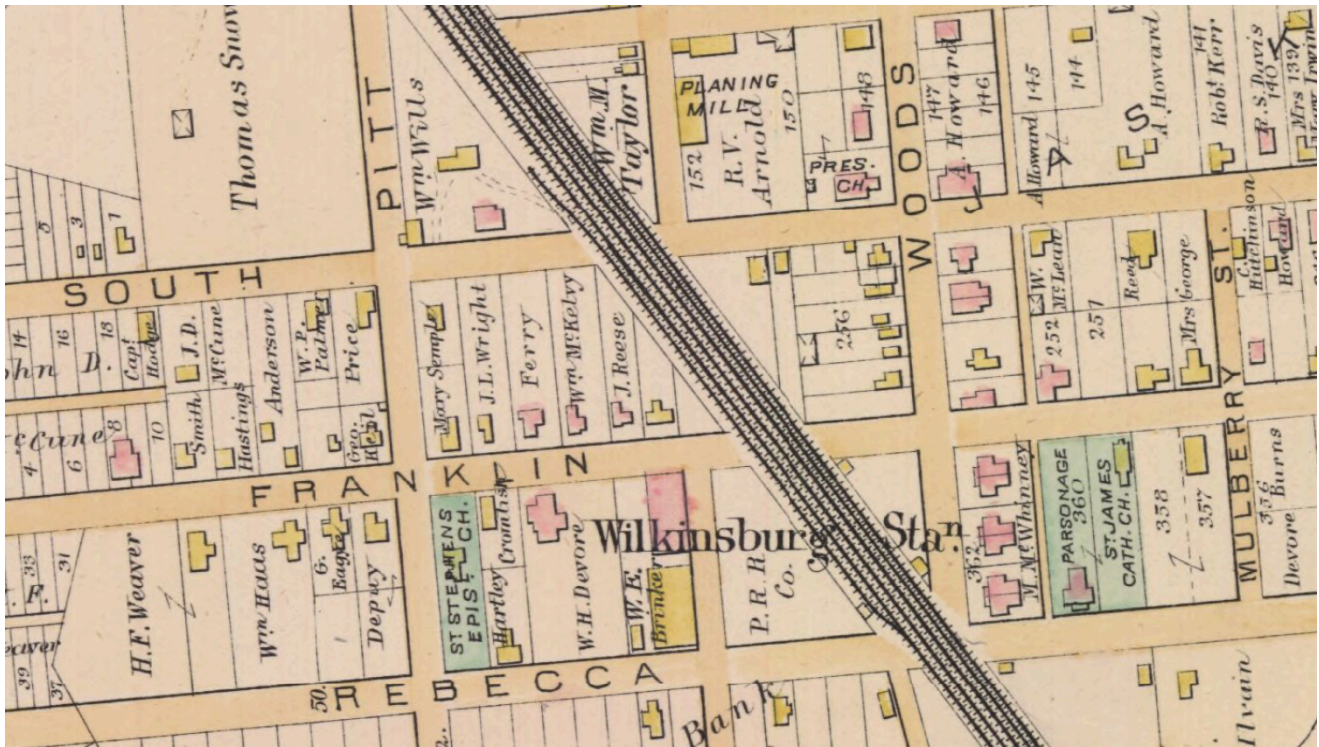
## Wilkinsburg, East Liberty and Shadyside train stations, circa 1870.

These images, taken over 150 years ago, (1870) show **Wilkinsburg's** first train station as well as **East Liberty Station** and **Shady Side Station** along the Penn Central railroad. All of these stations were the first ones built for their respective areas after the Pennsylvania Railroad was established in the early 1850s. Each of these was later replaced with a more substantial station. More information about the history of these stations is presented in this issue of the Archives.

These photos are part of the Pennsylvania Historical and Museum Commission (PHMC), Penn Central Railroad Collection, MG-286.1549, Box 12. Pennsylvania State Archive, Harrisburg, Pennsylvania.



The Pennsylvania Railroad tracks through Wilkinsburg were completed in December, 1852. This train station was built in 1860 on Wood Street, near the intersection of Franklin Avenue. Soon the growth of rail transportation led the PA Railroad to lay four sets of tracks, inside tracks for express trains and outside tracks for local service. The railroad ran at street grade level. The street-level crossings at Penn Avenue, South Avenue, Franklin Avenue, Wood Street, and Rebecca Avenue were very dangerous, with many injuries and deaths. By 1916 the tracks had been raised, providing safe crossings.



**EXPLANATIONS.**

- Brick or Stone Building.
- Frame Building.
- Stables - Sheds - Barns.

Hopkins maps are a valuable resource of fascinating information. They are free to access at: [historicpittsburgh.org](http://historicpittsburgh.org)

The map above is part of G.M.Hopkins Company 1886 map of Wilkinsburg, Plate 14. The train station was located near the intersection of Franklin Avenue and Wood Street, and was a frame building as the map key indicates with a yellow rectangle.

It is interesting to note that in 1886 both St. James Catholic Church and St. Stephen's Episcopal Church (green rectangles for churches) had smaller frame structures on their property, and had not yet built their present stone edifices.



Wilkinsburg's second train station - built 1884

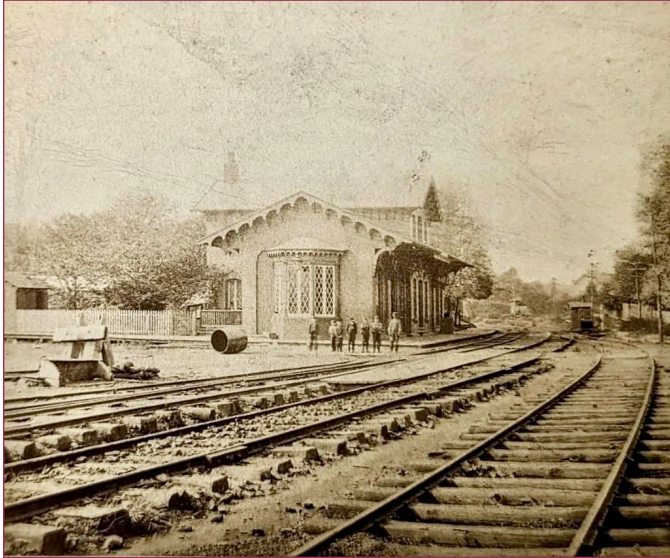
After the first Wilkinsburg Train station burned down in 1883, a new station was built in 1884 at the same location along Wood Street at Franklin Avenue. In this image, Wood Street is on the right side of the newly erected station.

The rail tracks had not been raised at the time of this photo. It would be another thirty years, 1914, before the process of raising the railroad tracks and lowering the surrounding streets would begin.

It was in 1914-1916 that the third and final Wilkinsburg train station was built about two blocks away at 901 Hay St.

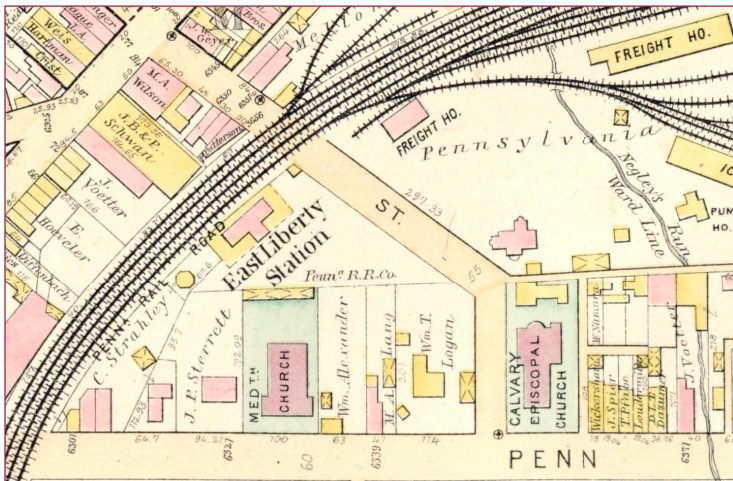
That beautiful station has recently been historically restored.

## Pittsburgh's East Liberty train stations - 1855-1963



The Pennsylvania Railroad connected Philadelphia and Pittsburgh via its Main Line in 1852. The most populous areas soon had stations built by the railroad. Records indicate that East Liberty had their first train station built in 1855. The image shown at left was taken in 1870.

This 1855 station served the East Liberty area well for fifty years. By 1905 the population had increased significantly and a new station was planned. Frank Furness, Philadelphia's leading architect was hired to design the new station. Furness had designed more than 600 buildings including Philadelphia's Broad Street Station.



This 1890 map was produced by the G. M. Hopkins Company and is Plate 17 of the East Liberty, Larimer map. (Maps are free to view through: [historicpittsburgh.org](http://historicpittsburgh.org))

The East Liberty Station was located along the tracks near the Penn Avenue juncture. This station was replaced with a larger one in 1905. This location was approximately where the **Mattress Firm** store currently is in the strip mall behind **Trader Joe's** at 6343 Penn Avenue.



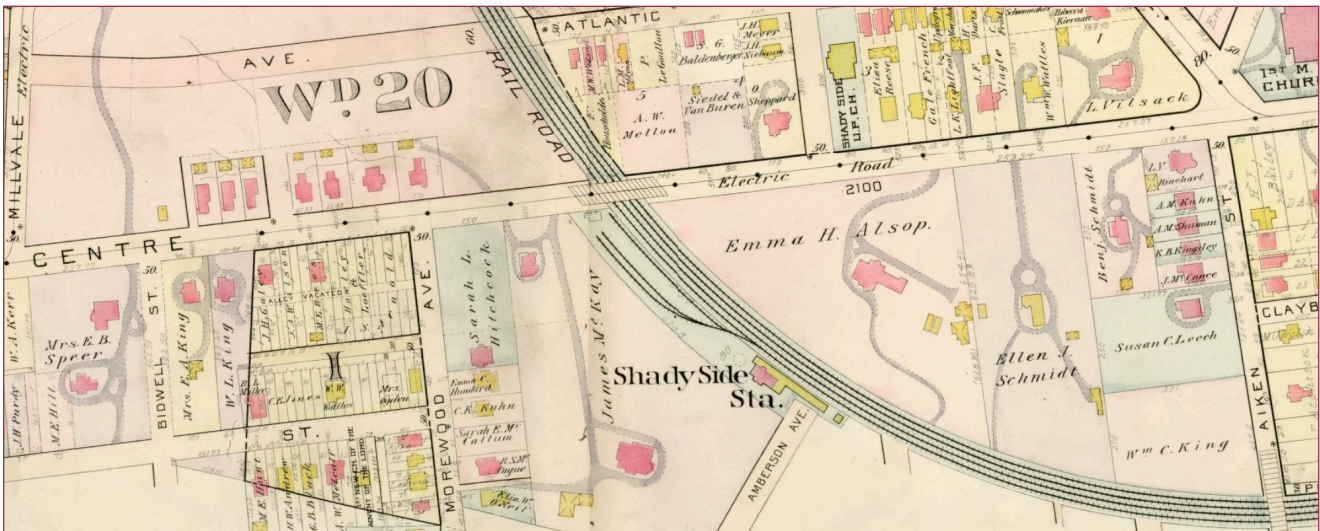
By 1905 the PA Railroad built a new station due to increased passenger load in East Liberty. It was a two-story brick station with a gabled roof and a large wraparound porch. The front facade featured large lunette windows. Inside, the lobby was illuminated with skylights. After World War II ridership by rail decreased and this station was demolished in 1963. This postcard view is from 1910.

## Pittsburgh's Shady Side train stations - 1860-1970

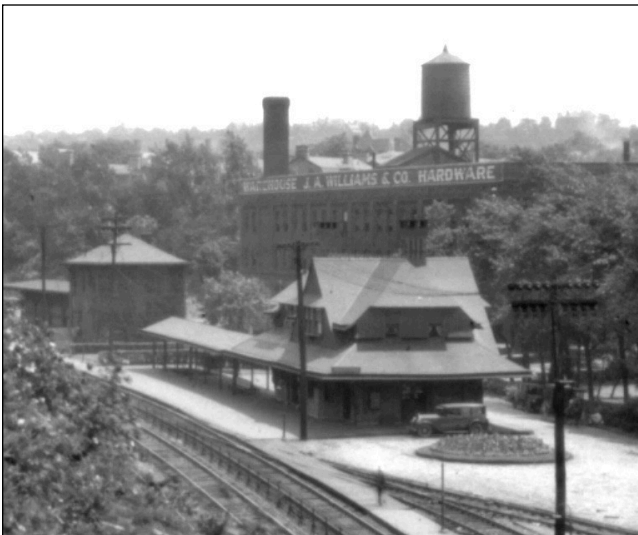


Thomas Aiken (1814-1873) owned a large parcel of farmland about three and one-half miles east of downtown Pittsburgh. In 1854 he divided his lands with his son David (1833-1889) with Amberson Avenue being the border.

After the PA railroad connected Pittsburgh to Philadelphia in 1852, Thomas Aiken and his son David asked the railroad to put a stop and station along his property line. In 1860 the stop and station was approved. David donated to the PA Railroad land for the wood frame station to be erected. His wife Caroline named the area Shady Side. This photo shows the station in 1870.



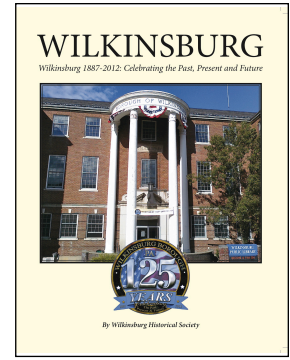
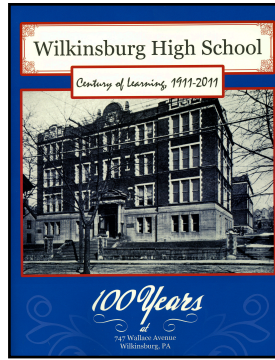
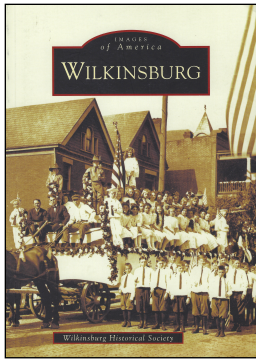
Shady Side station is shown in this 1899 Hopkins map, Shadyside, Bloomfield Plate 6, found at [historicpittsburgh.org](http://historicpittsburgh.org) Pink color of structure indicates that it is a brick building.



This 1928 image shows the second iteration of the Shady Side station, courtesy of Historic Pittsburgh, the Digital Research Library at the University of Pittsburgh. This two-story brick station was erected in the late 1880s, and torn down in the 1970s.

The information about Shady Side station was from: *The Anatomy of a Streetcar Suburb A Development History of Shadyside, 1852-1916* by Robert J. Jucha in *Western Pa Historical Magazine*, vol 62, no 4, Oct. 1979, pp. 301-319.

Pittsburgh Neighborhood Alliance. *An Atlas of the Shadyside Neighborhood of Pgh, 1977.*



These are the three books that the **Wilkinsburg Historical Society** wrote and published during the past twelve years. They help to promote and preserve the history of Wilkinsburg and raise funds for the various projects of the Society. All three books are still available to purchase from the Society. Another way to support the activities of the Historical Society.

On the far left is ***“Images of America - Wilkinsburg”***, a 128 page soft-bound book printed by the Arcadia Publishing Company. It includes over 220 black and white photos depicting the history of our town from the early land patents in the late 1700s up to the 75th celebration of Wilkinsburg in 1962. The book is available from the Wilkinsburg Historical Society for \$20.00, plus \$3.00 for shipping.

The middle book above is ***“Wilkinsburg High School - Century of Learning 1911-2011”***. This book chronicles the history of the local high school from its early start in the late 1880s, the creation of the magnificent structure in 1910, and each decade since with highlights of the events that were important in the lives of the students and the Wilkinsburg community. For over 100 years the Wilkinsburg High School served the Borough of Wilkinsburg students and this book has several hundred photos showing much of this important history. This *Century of Learning* book is available from the Wilkinsburg Historical Society for \$15.00, plus \$3.00 for shipping.

The book on the far right is ***“Wilkinsburg - 1887-2012, Celebrating the Past, Present and Future”***. This book was produced by the Historical Society in 2012 to recognize the 125th anniversary of Wilkinsburg’s incorporation as a Borough. This soft-bound book has 196 pages and includes chapters on the history of Wilkinsburg, the celebrations from the past, information about Wilkinsburg’s government, and all the events that occurred during the 125th celebration. There are several chapters about the clubs and organizations in Wilkinsburg as well as the churches and worship centers in the Borough. The “future of Wilkinsburg” section recognizes advertisers and sponsors who helped to fund the creation and printing of the book. This book, originally \$15.00, is now available for \$10.00, plus \$3.00 for shipping.

<p>Make check or money order payable to: <b>Wilkinsburg Historical Society</b></p> <p>Orders can be mailed to: Wilkinsburg Historical Society, P.O.Box 17252, Pittsburgh, PA 15235</p>			
Images of America - Wilkinsburg	(\$20.00 + \$3.00) = \$23.00	Quantity _____	Total _____
Century of Learning 1911-2011	(\$15.00 + \$3.00) = \$18.00	Quantity _____	Total _____
Wilkinsburg 1887-2012	(\$10.00 + \$3.00) = \$13.00	Quantity _____	Total _____
Name _____		Address _____	
City _____	State _____	Zip _____	



**Disney Takes Center Stage At Turner Intermediate**



audience erupts in applause as the actors move together to sing and dance. The show offers 30 music and dance numbers, the most familiar being "Black Is the Color of My True Love's Hair". The audience erupts and joins in the fun. The actors are emotional, excited, and, best of all, having a blast.

Disney Musical-in-Schools is an initiative sponsored by The Pittsburgh Cultural Trust to develop sustainable musical theater programs in Title I elementary schools. Music teacher Sherron VanMetter, head director Claren Stewart, and art teacher Susan Agnew submitted the application to win the grant. Since this is the district's first full year with the grant, the entire program has been new to the district. During the second year, the district will receive rights, materials, and staff training. In the third, the district will receive a discount on the rights for a musical, and from the fourth year and onward on up to...

COVID-19 has been announced local. But folks waiting in anticipation for the theatrical event of the year. It's been a long wait to watch The Jungle Book Kids, slated to premiere in 2020, but cancelled due to...

COVID-19 has brought there is an energy in the room, a palpable pulse of enthusiasm before Turner Intermediate students emerge on stage. The curtain slowly opens, and the...



**Gallery Exhibition in Wilkinsburg Train Station**

These photos and more by Cheryl Lutz. Exhibitions, which have held since 2012, Wilkinsburg. They feature and present interesting and unique pieces for the high school and college students from Wilkinsburg Community College.

Don't miss out on **The Wilkinsburg Sun**, a free monthly community newsletter published by the volunteer Wilkinsburg Community Newsletter Board, with the support of the Wilkinsburg Borough, the Wilkinsburg School District, the Wilkinsburg Chamber of Commerce and the Wilkinsburg Community Development Corporation.

The Sun accepts submitted articles provided they are related to Wilkinsburg and are civic-minded.

<https://wilkinsburgsun.wordpress.com>

Sign up to receive The Sun by email at:

<http://eepurl.com/v0iBP> and friend The Sun on Facebook.

Wilkinsburg Historical Society has a website, to share more information about the history of Wilkinsburg. [wilkinsburghistory.wordpress.com](http://wilkinsburghistory.wordpress.com)

Mailing address: **Wilkinsburg Historical Society, P.O. Box 17252, Pittsburgh, PA 15235**

The "Archives" Historical Society newsletter is published monthly, March through November.

We do not usually publish the Archives during the three Winter months of December, January and February.

Wilkinsburg Historical Society yearly dues for the Wilkinsburg Historical Society are:

\$20.00 INDIVIDUAL Member, \$35.00 FAMILY Membership

\$10.00 STUDENT or ASSOCIATE Members Please keep your membership dues up to date.

Contributions are needed for "Lights for Lincoln", to get improved lighting for the Lincoln Plaza area. Abraham Lincoln stands in the dark after sun-down. Your donation can help us illuminate this outstanding area overlooking the Lincoln Highway.

**Wilkinsburg Historical Society - Membership application**  
**Help promote the valuable history of Wilkinsburg.**

Name \_\_\_\_\_

Address \_\_\_\_\_

City, State, Zip \_\_\_\_\_

Home Phone \_\_\_\_\_ Cell Phone \_\_\_\_\_

E-mail address \_\_\_\_\_

( ) \$20 Individual membership

( ) \$35 Family membership

( ) \$10 Student or associate membership

( ) \$\_\_\_\_\_ Additional donation

Please make check payable to: **Wilkinsburg Historical Society**

**PO Box 17252, Pittsburgh, PA 15235**

Anytime is a good time to pay your dues for the Wilkinsburg Historical Society. We have many preservation projects going on, and providing displays for Wilkinsburg events. Many thanks to those of you who have already sent in your membership dues. Please use the address on the form, our PO box.